

GOTTHOLD EPHRAIM LESSING'S

EMILIA GALOTTI

ottisdotter
productions



Sharp and funny satire
with a strong cast.

Every minute of the journey
was thoroughly engrossing.

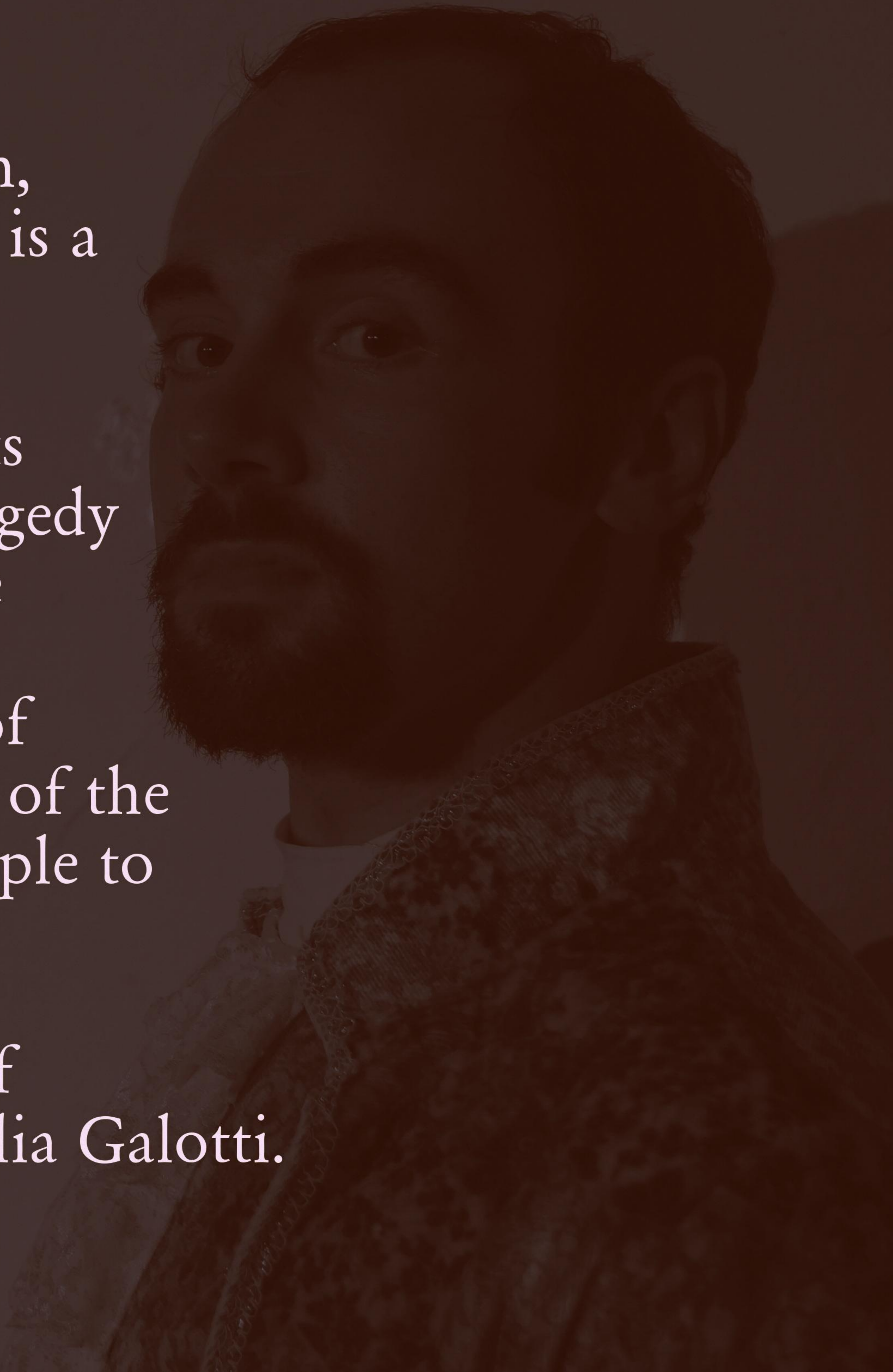
EVERYTHING THEATRE



Set in a Royal Court of a small Italian town, Gotthold Ephraim Lessing's Emilia Galotti is a tale of absolute power, lust and honour.

Considered to be as famous as Hamlet in its native Germany, this Enlightenment-era tragedy tells the story of the virtuous Emilia, whose wedding day starts a chain of events which unravel apace. Based on the Roman myth of Verginia, the play shows the limitless excess of the aristocracy and the will of the ordinary people to resist unjust force.

Ottisdotter's production is an adaptation of R. Dillon Boylan's 1878 translation of Emilia Galotti.



Who are we?

Ottisdotter are a company with a specific interest in lesser known and obscure plays with dimensions that emphasise the roles of women in society.

Ottisdotter Productions have produced two works, Gotthold Ephraim Lessing's Emilia Galotti in 2014 and Henrik Ibsen's last English world premiere, The Feast at Solhaug, in 2015.

The company is led by Dr Mark Ewbank and Dr Holly Prescott.





About the Production

Ottisdotter's *Emilia Galotti* ran for thirteen performances in September 2014 at the 60-seater Barons Court Theatre in London. The run was successful with a number of sell-out nights and matinees.

Particular interest in the production came from education, with a number of school groups attending.

Emilia Galotti is often required reading for German Studies students and a number of universities were in touch about possible ad-hoc performances.



Audience Profile

- ★ Student groups (German studies)
- ★ Student groups (Theatre studies)
- ★ Student groups (Gender studies)
- ★ Student groups (Politics / European Politics)
- ★ German-natives / Italian natives

Gotthold Ephraim Lessing is the father of 'dramaturgy' and his works receive further attention for this reason. Cited as 'the German Hamlet', Emilia Galotti is the most famous play in the country.



Technical Specifications

The production of Emilia Galotti tours with 10 actors (6M | 4F). Running time is 2h30 (including interval).

Performance Area

Minimum 4m x 4m with use of wings

LX

In house lighting system

Ideal min - two floods, two fresnell, two spots

SFX

Sound system with mini-jack input

Technical Rehearsal: 3 hours

Dress Rehearsal: 3 hours

Some storage space required

We'd love to hear from you and begin discussing ways in which Ottisdotter and your venue could work together now and in the future.

Dr Mark Ewbank
Dr Holly Prescott
Artistic Directors
ottisdotter@gmail.com
07879337834
**ottisdotter
productions**



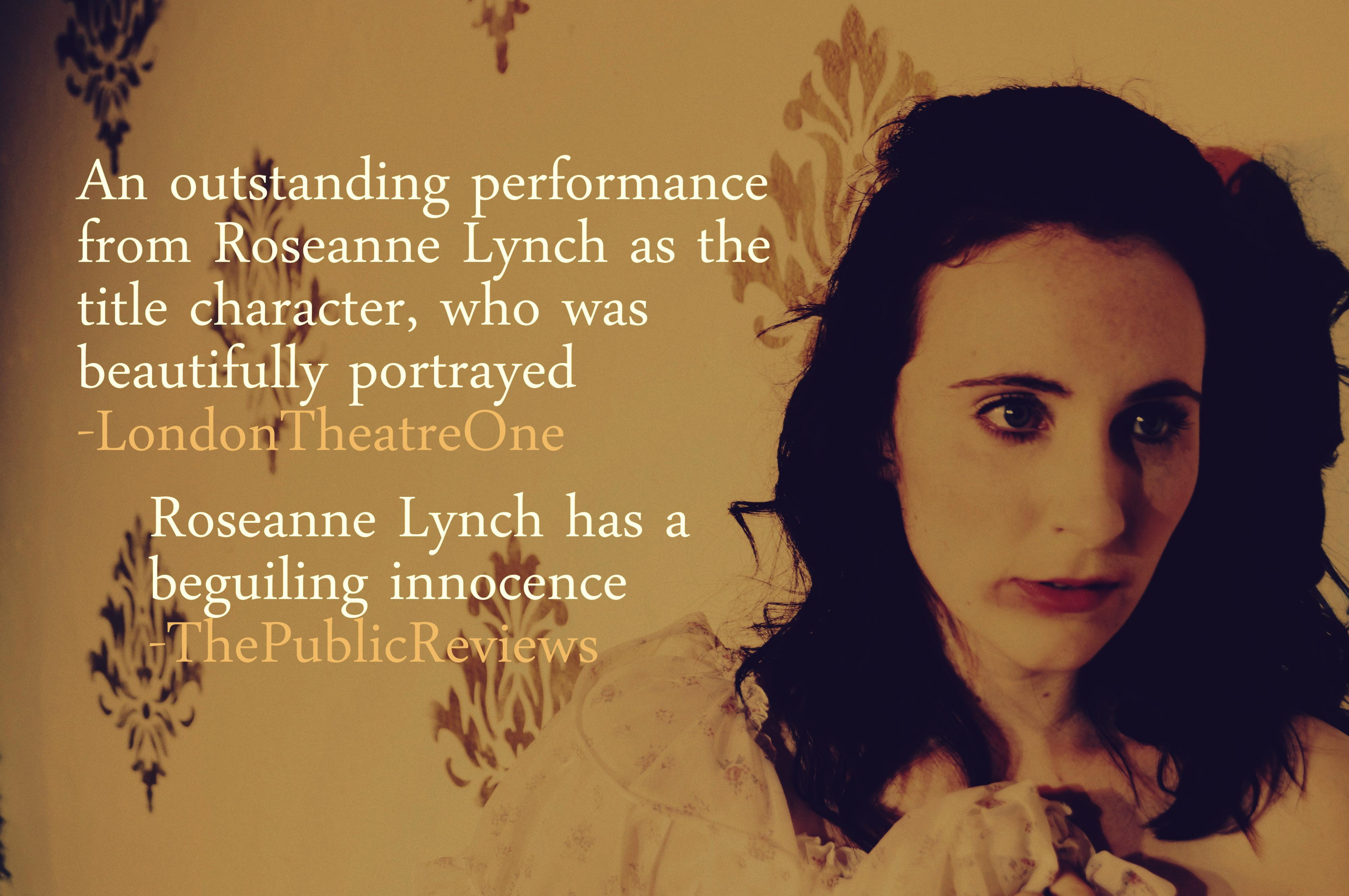


Sharp and funny satire
with a strong cast
- EverythingTheatre

Ewbank's production builds to
a strong dramatic climax
- ThePublicReviews

Deftly performed with some
outstanding performances
- LondonTheatreOne





An outstanding performance
from Roseanne Lynch as the
title character, who was
beautifully portrayed
-LondonTheatreOne

Roseanne Lynch has a
beguiling innocence
-ThePublicReviews

Francesca Burgoyne was
utterly captivating as the
embittered Orsina
-EverythingTheatre

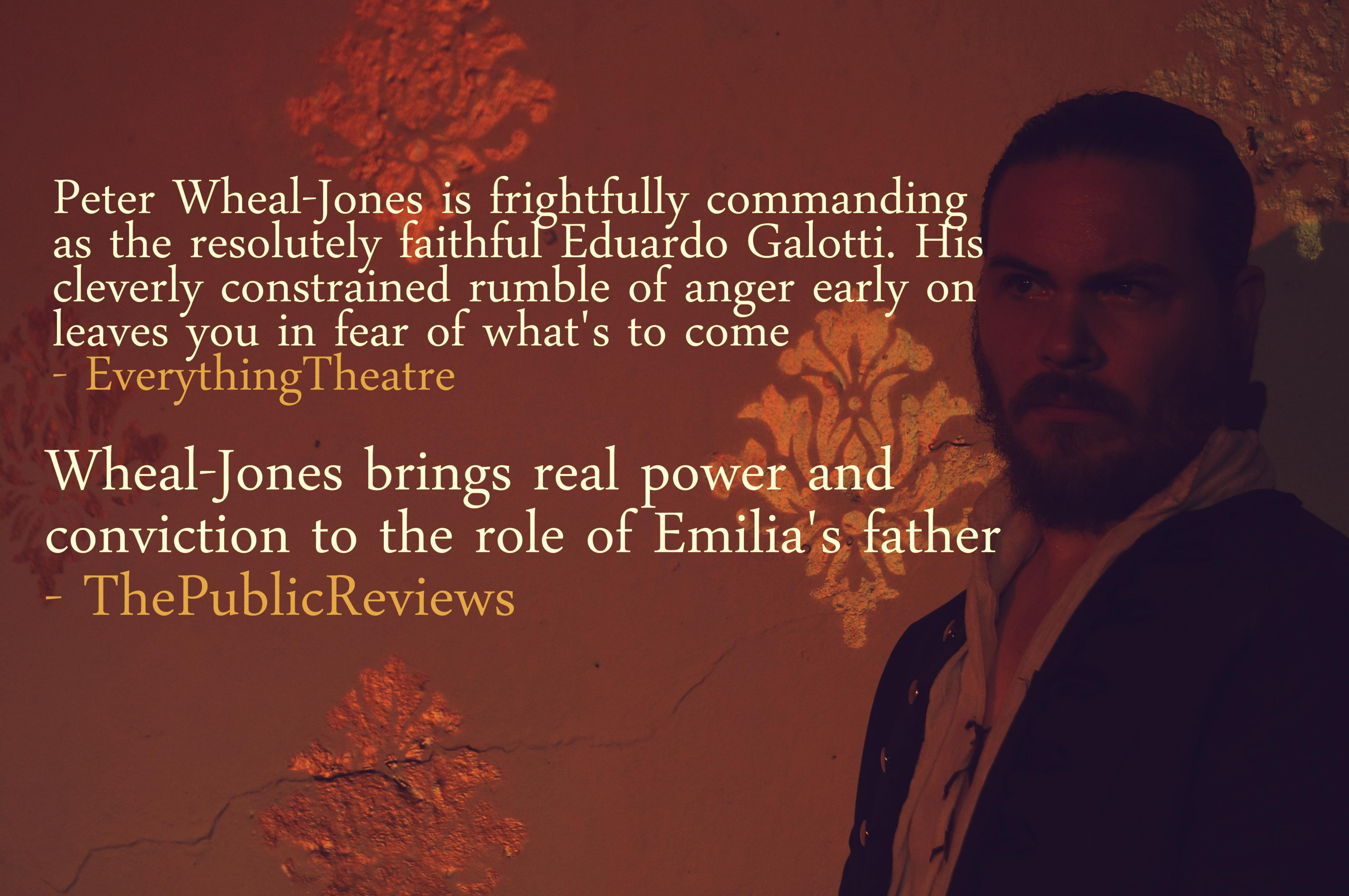
Burgoyne's wronged Orsina scorches the
stage with both her beauty and her mind
and shows the latter whirring away
as it hurtles towards its inevitable end.
-RemoteGoat





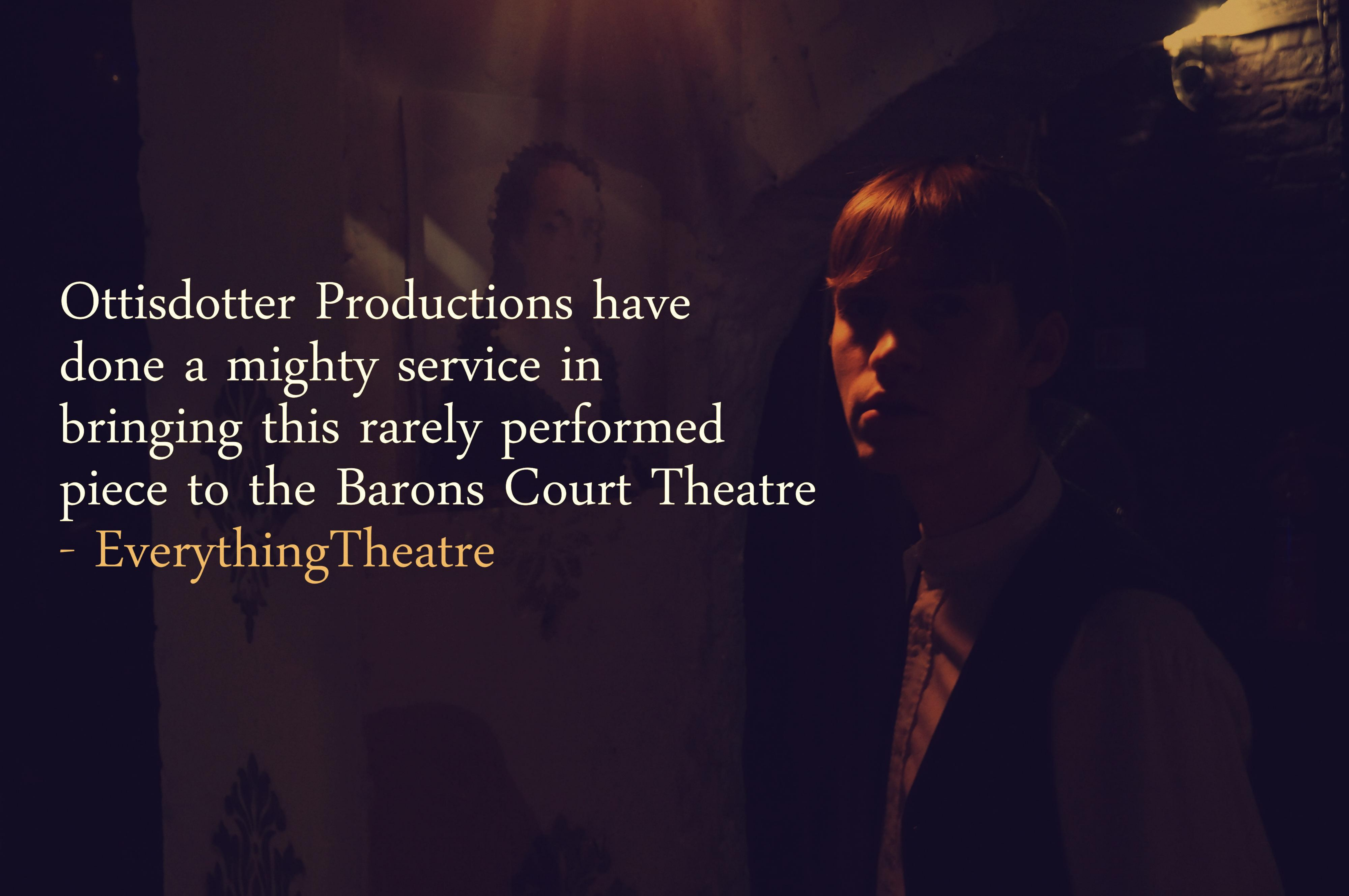
Che Watson gives a
magnificent performance
as the Prince of Guastalla.
-EverythingTheatre

A self-serving vacuous popinjay of
the Julian Orchard school, Watson's
own interpretation is spot-on
-RemoteGoat



Peter Wheal-Jones is frightfully commanding
as the resolutely faithful Eduardo Galotti. His
cleverly constrained rumble of anger early on
leaves you in fear of what's to come
- EverythingTheatre

Wheal-Jones brings real power and
conviction to the role of Emilia's father
- ThePublicReviews

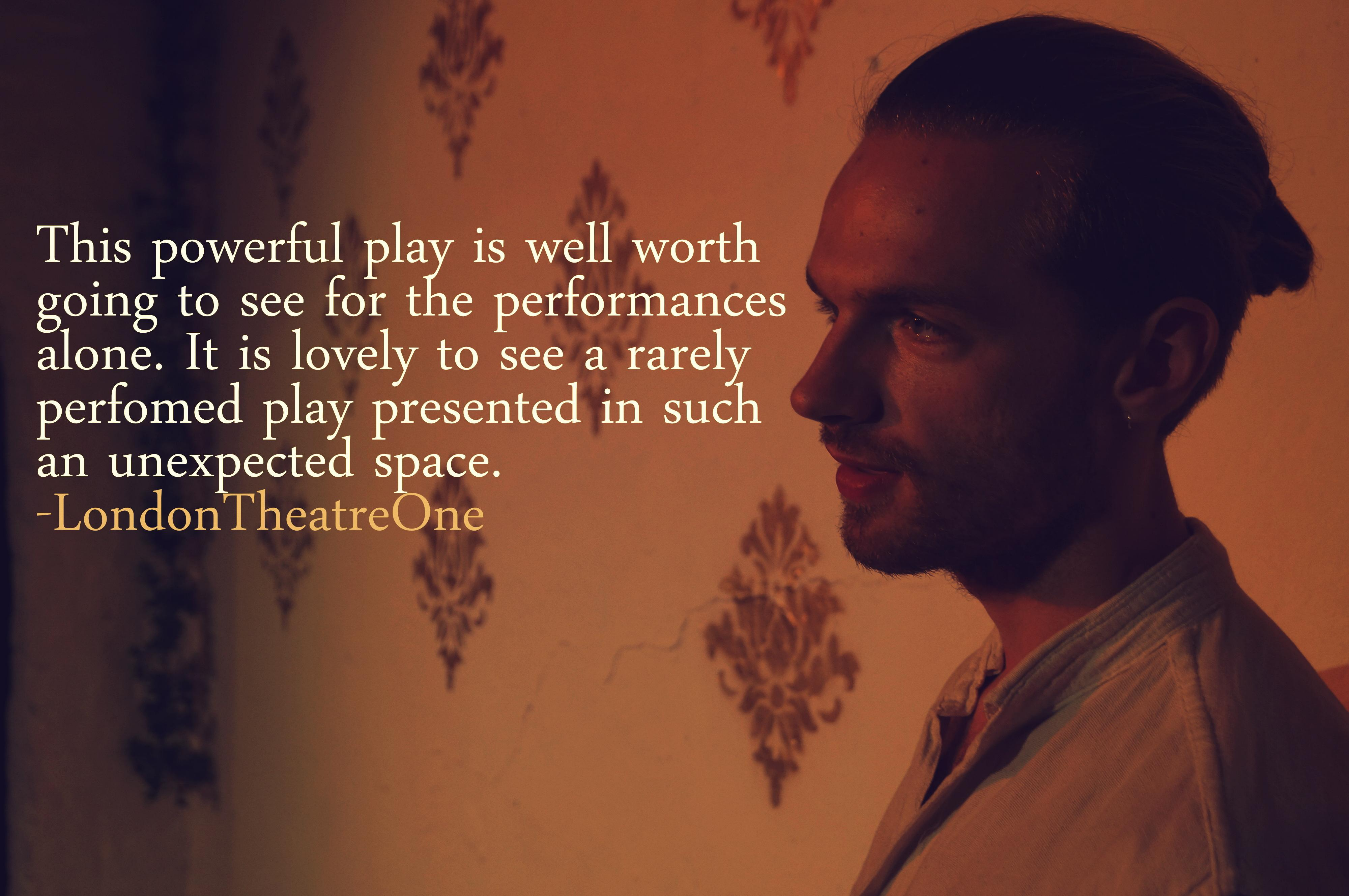


Ottisdotter Productions have
done a mighty service in
bringing this rarely performed
piece to the Barons Court Theatre
- EverythingTheatre




Samuel Haughton is creepily effective as the Prince's scheming and duplicitous fixer
-ThePublicReviews

Haughton provides a clear sense of the burgeoning treachery that the Prince nor the other characters can contain
-EverythingTheatre

A man with dark hair tied back and a beard is shown in profile, looking towards the left. He is wearing a light-colored, button-down shirt. The background is a wall with a repeating pattern of stylized floral or damask motifs. The lighting is warm and soft, creating a contemplative mood.

This powerful play is well worth going to see for the performances alone. It is lovely to see a rarely performed play presented in such an unexpected space.

-LondonTheatreOne

A man with dark hair and a slight smile is shown in profile, looking towards the left. He is wearing a white collared shirt under a dark vest. The background is a plain, light-colored wall. To the right of the man, there is a large, faint shadow of a hand, suggesting a simple set design. The lighting is soft and focused on the man's face.

The simple set design
and overall effect of the
play is very pleasing;
every minute was
thoroughly engrossing
- Everything Theatre